

ADJUST TO FINISHED GRADE WITH
 CONCRETE GRADING RINGS. OR
 APPROVED RUBBER RINGS
 (MAXIMUM 12")
 (DOUBLE RAM-NEK BETWEEN EACH)

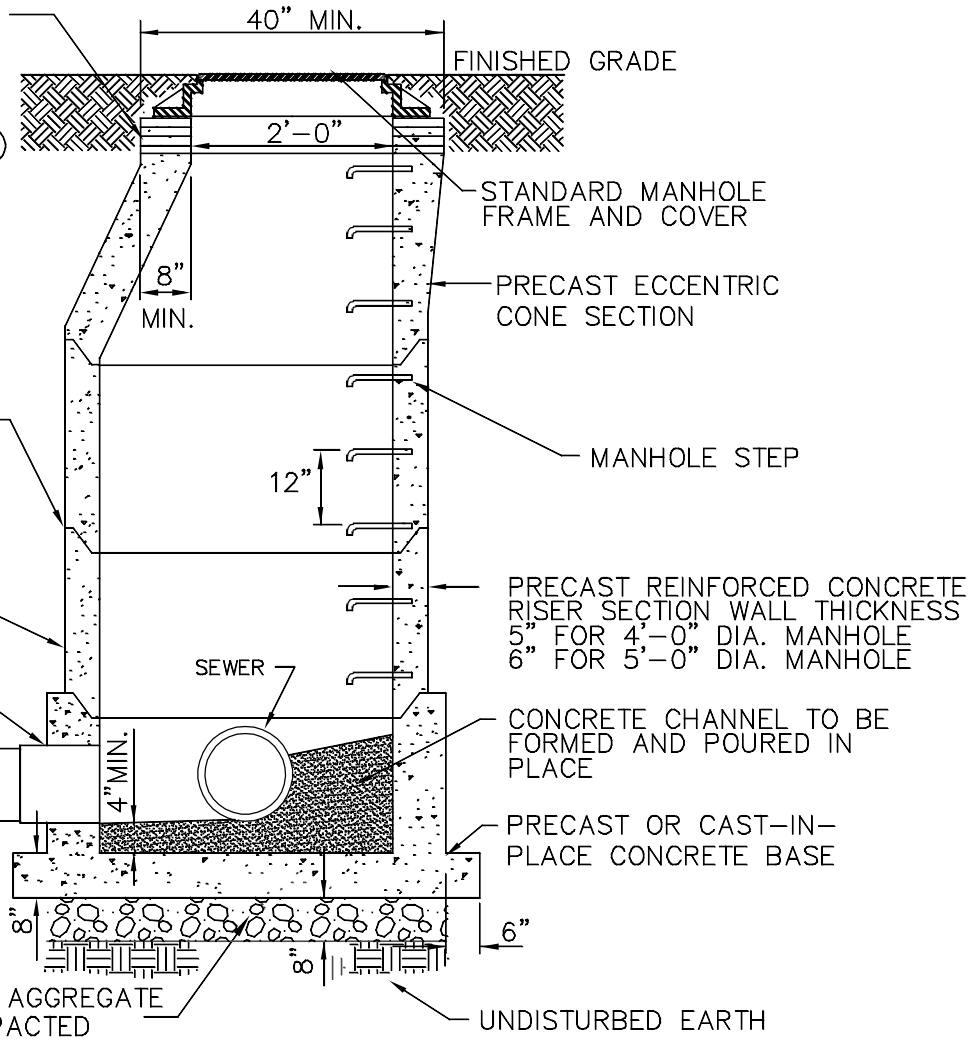
JOINTS SEALED WATERTIGHT
 W/DOUBLE RAM-NEK
 PLASTIC GASKETS

PRECAST CONCRETE
 RISER SECTION

FLEXIBLE SLEEVE OR
 GASKET

SEWER AS
 PER PLAN

APPROVED AGGREGATE
 WELL COMPACTED



SANITARY SEWER MANHOLE

NOT TO SCALE

NOTES:

1. SEE SECTION 02605 OF THE SPECIFICATIONS.
2. MANHOLES SHALL CONFORM TO ASTM C-478.
3. THE ENTIRE OUTER SURFACE OF THE MANHOLE SHALL BE COATED WITH 2 COATS BITUMASTIC.
4. MANHOLE FRAME AND COVER SHALL CONFORM TO SECTION 02605.
5. WATERTIGHT COVERS SHALL BE USED IF REQUIRED.
6. MANHOLE SECTION HEIGHTS SHALL BE APPROVED BY AUTHORITY.

MANHOLE

**SPRING - BENNER - WALKER
 JOINT AUTHORITY**

DATE
 4/05
 SCALE
 NTS
 PROJECT
 SHEET
 2